

Jade State News

Wyoming State Mineral & Gem Society, Inc.

Award-Winning WSMGS Website: wsmgs.org

Volume 2024, Issue # 1

April 2024



WSMGS OFFICERS

President: Jim Gray

pres@wsmgs.org

Vice President: Linda Richendifer

vpres@wsmgs.org

Secretary: Leane Gray

sec@wsmgs.org

Treasurer: Mac Goss

treas@wsmgs.org

Historian: Roger McMannis

hists@wsmgs.org

Jade State News Editor:

Ilene Olson

jsn@wsmgs.org

RMFMS WY State Director:

Leane Gray

wydir@wsmgs.org

RMFMS WY PLAC Director:

Rich Gerow

placdir@wsmgs.org

The WSMGS conducts meetings quarterly and as special events require.

Wyoming Rockhound marks 108th birthday

By Sean Mortimer

Northern Wyoming News

Published December 21, 2023

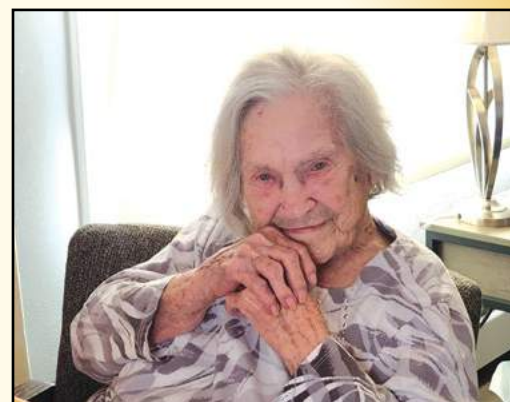
Printed with permission

Editor's note: Edna and Walter Scott became members of the Shoshone Rock Club in Powell in 1965. See Club News on [Page 18](#) for a glimpse of that history.

Edna Scott celebrated her 108th birthday on Nov. 24, marking two milestones: the obvious one of achieving the age of 108, and celebrating her first birthday in Worland.

Previously, Edna lived in Powell until 2000, then moved to an apartment in Laurel, Montana, where she lived until she took a fall.

Afterward, Edna moved in with her great niece Fawnett Greff in Bridger, Montana, in 2022. Fawnette finally



Edna Scott, formerly of Powell, now lives with her niece in Worland. Scott turned 108 in November. Photo by Sean Mortimer of Northern Wyoming News.

relocated the two of them to Worland this August to be closer to Fawnette's niece.

Edna's memory of her early life isn't as good as it used to be, but in piecing together what she could remember, it's

(Continued on Page 2)

Table of Contents

Wyoming Rockhound is 108.....	Page 1	2024 Rock Show Flyers	Page 12
Message from the President	Page 3	Club News	Page 17
New Wyoming Director, RMFMS.....	Page 4	Wyoming Rock Club List	Page 19
Getting to Know Jim & Leane Gray ..	Page 5	WSMGS Electronic Mtg	Page 20
Critical Mineral Survey in WY	Page 6	AFMS/RMFMS Ethics & Policies	Page 22
Minerals of Wyoming	Page 8	Wyoming Rock Shop List	Page 23

Wyoming Rockhound Turns 108

(Continued from Page 1)

easy to see that she is an amazing woman.

Edna was born in Melstone, Montana, in 1915 to John and Iris Harris. Life was much different then; this was the time before electricity or telephones became common in households, and World War I was underway.

She grew up on a farm outside of town and began to help around the farm when she was 5 years old. Her father had just sustained an injury that would render him crippled for the remainder of his life, and he needed her help to keep up with the chores. She said, "I didn't know any different back then, it's just what I had to do."

Edna recalls her favorite chore was milking the cows, even though she didn't drink milk.

Eventually the farm became too much for her family to keep up with, and they moved into town. Edna graduated from high school in Melstone, and left home to work in Roundup.

Edna went on to finish beauty school, and she moved to Bridger, where she ran a beauty salon with her partner, Margarette Larson, for seven years.

In 1943, at age 28, Edna met Walt Scott and they got married and moved to Powell later that year. At the time, young men were being drafted to fight for the United States in World War II, and she remembers, "He shipped out the day we were married."

Walt's military service was fairly brief, though, because he was injured in the war and returned home with a Purple Heart.

Walt went back to work at his family's plumbing business, earning enough money that Edna never had to work. Although she didn't work and the pair never had children, Edna had no trouble staying busy.

She and Walt spent time together hunting, fishing and square dancing. While Walt was working, Edna had hobbies to keep her busy.

When Northwest College opened in 1946, 31-year-old Edna enrolled herself in free courses and immersed herself in her studies. Her favorite subjects were archaeology and geology, and they sparked her passion for the outdoors.

She spent her days walking miles through the desert,

searching for rocks, artifacts, fossils and cacti. Fawnette said that Edna had amassed a collection of nearly 1,000 cacti and had an entire room for them. She had a collection of fossils that included dinosaur bones and shark teeth.

Edna and Walt were among the founders of the Homesteader Museum in Powell, and Edna would go on to donate her collection of rocks and fossils to the Rocky Mountain College Geology Department.

Walt passed away in 1997, and Edna continued to live in Powell until 2000, when she moved to live by herself in an apartment in Laurel at 85 years old. After 57 years of living in Powell, Edna had lots to say about it. Multiple times over the course of the interview, she said, "Powell was a nice town. I liked the people; they were very welcoming and very nice."

Now living in Worland with Fawnette, Edna is in incredibly good health for her age. She still has her senses of sight and hearing, although weaker than they used to be. She likes to sit in her chair and watch the birds outside the window, or just to sit and watch TV. Fawnette said, "Edna is very content with what she does nowadays."

On reaching the remarkable age of 108, Edna said she never imagined that she would live this long. She said, "I guess I'm just too ornery to die."

In all seriousness, Edna has no idea why she has lived as long as she has. Fawnette may have helped shed some light on that, though, saying that Edna never smoked or drank, and that she walked at least five miles every day until she was in her late 80s. Edna said that she still feels very healthy, and she doesn't feel like "it's her time yet." She was quick to point out that she had better get into the doctor for a check-up though. (She forgot that she just went last month.)

You may wonder, what wisdom does a 108-year-old woman have to give? Asked just that, Edna said, "Just live a good life."

Fawnette reminded her what Edna's mother used to tell her when she'd go to the dance hall in Melstone as a kid: "No smoking, no drinking, and no going out in the hall to meet the boys."

Seeing how it worked out for Edna, it might be worth thinking about.

[Back to Page 1](#)



Message from the President

By Jim Gray
President, WSMGS
Vice President, RMFMS

Leane and I made it back from Quartzsite mid-February after a good show and safe travels. I enjoy meeting new people, seeing friends, and getting new rock to cut and cab. I was glad to see several rock club members and a few of the RMFMS and AFMS members.

I have been working with Gary Haptonstall of Douglas, Wyoming over the past few years to develop a new rock club there, and I am happy to announce that the Converse County Rockhounds have gotten started and have joined the WSMGS and RMFMS! Congratulations to the new group in Douglas; we are glad to have you be a part of the fun, education, and promotion of our hobby. Welcome!!

Several people in Sheridan, Wyoming have been meeting and gotten a rock club there off the ground. I have been talking with their leadership about joining the WSMGS and RMFMS. This would be exciting and further expand the presence of rock hounding and preservation of access to public lands.

Speaking of public lands, the Rock Springs District of the BLM closed the comment period for the proposed revision of their Resource Management Plan mid-January. The public comments are being reviewed and according to the Cowboy State Daily (<https://cowboystatedaily.com/2024/01/17/task-force-says-blm-may-listen-to-wyoming-about-controversial-rock-springs-plan/>) the task force assembled by Wyoming Governor Mark Gordon has completed their analysis of the issues and proposed alternatives. The Cowboy State Daily News reported that "BLM Director Tracy Stone-Manning heard directly from an 11-member Wyoming task force when she came to Wyoming and attended the group's final in-person meeting recently." I strongly recommend that all club members and communities keep their eyes and ears open where we live, work, and recreate to report closures and proposed changes to access to public lands.

Springtime rock shows are starting to take off! Congratulations to Powell's Shoshone Rock Club and the Cody 59ers for being jointly awarded the WSMGS annual show in 2024. The show is coming together, and you won't



Jim Gray sits at a lapidary unit in his shop. Photo by Leane Gray

want to miss it!

Shows in Wyoming this year are:

- Sheridan, May 4 and 5
- Cheyenne, May 18 and 19
- Wyoming State Mineral and Gem Show in Powell, May 30-31 and June 1
- Sublette County (Big Piney) June 14-16
- Natrona County (Casper) July 13 and 14
- Jade Fest in Jeffrey City, August 9-11

Gillette and Douglas clubs are working on shows, but no dates are set yet.

Organizational changes within the Rocky Mountain Federation of Mineralogical Societies and the Wyoming State Mineral and Gem Society have occurred because I am now Vice President of RMFMS. Normally, the WSMGS President is also the Wyoming Director for the RMFMS, but I cannot be both VP and WyDir, therefore I have appointed Leane Gray as the new Wyoming Director for the RMFMS. Welcome Leane, and I look forward to working with her to continue building and promoting the amazing Wyoming State Mineral and Gem Society clubs!

Until next time,

Jim

[Back to Page 1](#)



New Wyoming Director for RMFMS



Leane Gray

Leane Gray has been appointed as the new Wyoming State Director for the Rocky Mountain Federation of Regional Mineralogical Societies.

Leane Gray also serves as Secretary of WSMGS and Treasurer for the Sublette County Rock Hounds.

Jim Gray, President of Wyoming State Mineral and Gem Society and President of Sublette County Rock Hounds, has served as Wyoming Director for the RMFMS since he was elected WSMGS President. It is common for a state's mineralogical society president to also be elected as the state director of the RMFMS.

However, Jim Gray was elected for a two-year term as Vice President of RMFMS at the July 2023 annual convention in Casper. That term began Nov. 1. The State Director cannot also be an RMFMS officer. Therefore, at the suggestion of RMFMS Past President Sheri Johnson and elected President Bob Regner, Jim appointed Leane Gray to be the Wyoming Director for the duration of Jim's vacated term in that office.

The duties of State Director are specified in the RMFMS Operating Procedures, Page EC-1.

Each State Director shall:

1. Serve as liaisons between all member clubs in their district and the Executive Committee.

2. Render all possible service and assistance to member clubs.

3. Encourage all district clubs to publish a newsletter and have a website.

4. Assist member clubs with local, state, and Federation shows.

5. Maintain close contact by letter, electronic communication, or personal visit if possible with member clubs.

6. Promote Federation activities and programs to member clubs and individuals.

7. Prior to the Annual Convention, encourage each member club to have club Delegates attend the House of Delegates meeting. If no club member is able to attend, help arrange a Proxy so the club will be represented and a quorum will be present to conduct business at the House of Delegates meeting.

Leane Gray said she is excited to have this opportunity to further serve WSMGS and work closer with RMFMS to help build up existing clubs and establish new clubs, increase enthusiasm for rock clubs, lapidary arts, and earth sciences throughout the U.S., and increase junior member involvement in our clubs.

"I'm sure my hopes are overly ambitious," Leane said, "but I believe it is important to aim high!". She will be making contact with each of the Wyoming clubs over the coming weeks to inquire how she can be helpful to them.

Leane expects to continue the activities begun by Jim Gray to get new clubs started in the state. They will work closely in their efforts for the WSMGS and the RMFMS.

Purposes and Policies Rocky Mountain Federation of Mineralogical Societies

Excerpts from 2023 Directory (Revised)

- To bring about a closer association of the Earth Science Groups in the Rocky Mountain Region.

- To increase and disseminate knowledge about minerals and other geologic materials.

- To encourage mineral study, collecting, and fashioning as a HOBBY.

- To sponsor local organizations interested in similar purposes.

- To encourage all clubs to publish bulletins and newsletters.

- To continue building up and promoting the use of Federation Library of slide programs, videos, CDs and DVDs to each member club.

- To distribute information and suggestions on the preparation and

arrangement of specimens and materials for exhibit and display.

- To provide information and assistance to clubs holding Gem and Mineral Shows.

- To encourage clubs to support the American Federation of Mineralogical Societies Scholarship Foundation Fund.

- To promote the concept that all members of all clubs are members of the RMFMS and the AFMS, and to encourage individual members and clubs to take responsibility for asking questions or making known that help is needed.

- To encourage more contacts between those working at the Federation level, between clubs, and between club members.

To keep the members informed of

problems and activities regarding the use of Public Lands.

- To continue to support Federation-sponsored programs.

The Rocky Mountain Federation is composed of a membership of approximately 9,000 members in the following states: Arizona, Arkansas, Colorado, Kansas, Nebraska, New Mexico, Nevada, North Dakota, Oklahoma, South Dakota, Texas, Utah and Wyoming.

The work of the Federation is directed by the Executive Committee, composed of: President, Secretary, Treasurer, Historian, State Directors and the two immediate Past-Presidents.

[Back to Page 1](#)



Getting to Know Jim and Leane Gray

By Nella Flurkey
Assistant Editor
Jade State News

Jim and Leane Gray own J L Rockshop in Marbleton, Wyoming, and they travel to rock shows in Wyoming, Utah, Montana and Arizona as dealers.

Jim is the President of the Sublette County Rock Hounds Club, and the President of the Wyoming State Mineral and Gem Society as well.

He also serves as Vice President of the Rocky Mountain Federation of Mineralogical Societies.

Leane is Treasurer for the Sublette Club and the Secretary for WSMGS. She also serves as the Wyoming Director for the RMFMS.

I am grateful that they took time from their busy schedules to allow me to interview them recently.

First, a few background questions:

Q: Are you originally from Wyoming?

Jim: Yes, I was born in Gillette.

Leane: No, I was born in Portland, OR. I moved to Wyoming in 1988.

Q: How did the two of you meet?

Jim: We were neighbors in Rock Springs. Leane literally jumped the fence.

Leane: Our first date was rock hunting.

Q: Have you always worked in a rock-related field?

Jim: No, I did other work — oil field construction. I owned a pipeline company. I sold the pipeline company and then built this rock shop.

Now, the focus on rocks:

Q: Were you always interested in rocks?

Jim: Yes, my whole life.

Leane: Oh, yes. As a kid, family trips were spent collecting beach rocks.

Q: Favorite rock/material to find?

Jim: Petrified wood.

Leane: Agate. Clear or white translucent agates.

Q: What has been your best find while rock hunting?

Jim: A piece of Wiggins Fork limbcast. I found it right by an elk I shot when I was 14 years old.

Leane: A beautiful banded agate found in Sublette County, Wyoming.

Q: What would be your dream area to visit, to collect what type of rock?

Jim: Wiggins Fork for petrified wood.

Leane: Anywhere for anything outdoors. I just want to be out looking for rocks!

Q: Favorite rock or material for lapidary work?

Jim: Obsidian because of the different varieties. Second favorite is pet wood.

Leane: Wyoming jade with quartz crystal inclusions. Jim does most of the lapidary work, and I have some he made for me.

Q: What is the best part of being in a rock club?

Jim: The opportunity to visit with other members who have the same interests.

Leane: Watching the diversity of people getting along and sharing their finds on field trips.

Q: What do you want to learn to do that you have never tried?

Jim: Casting silver for jewelry.

Leane: Making focal-piece beads from stone.

My final question for the Grays was:

Q: What will you have at the state show that other vendors might not have?

Jim quipped, "Me!"

In addition to their dealer booth at the Wyoming State Mineral and Gem Show, the Grays will have a table for the Wyoming State Mineral and Gem Society. There, Jim will sell rocks and related items for the state organization. Proceeds from that table will go to scholarships from WSMGS and affiliated clubs for earth science related studies.

Jim said his biggest challenge as WSMGS President is getting clubs to work together. But it is to the clubs' advantage to do so. "We have the same interests and share the same goals," he said.

Be sure to visit Jim and Leane at the upcoming WSMGS annual rock show, being held at the Park County Fairgrounds in Powell on May 30, 31, and June 1.

[Back to Page 1](#)



Critical Mineral Survey Conducted in Wyoming

Joint effort by US Geological Survey and Wyoming State Geological Survey

Source: Wyoming State Geological Survey

High-resolution radiometric and magnetic data collected during an airborne geophysical survey of central Wyoming are now available for public use. The [data](#) are the result of a collaboration between the Wyoming State Geological Survey (WSGS) and U.S. Geological Survey (USGS) that aims to better understand the area's geologic framework for critical and other essential mineral resources.

Helicopters flew last summer into fall, covering about 3,340 square miles encompassing the southern end of the Wind River Range, the Granite Mountains, Rattlesnake Hills, and the Seminoe-Ferris mountains west of Pathfinder Reservoir.

Dr. Erin Campbell, Wyoming State Geologist and Director of the WSGS, noted the significance of this dataset.

"Geophysical surveys are a common early step in mineral exploration, and this survey is among the first of such datasets to be made publicly available in Wyoming," says Campbell. "The data are the foundation for understanding the geology and mineral resources of the region. They will also provide invaluable information for energy and groundwater mapping, as well as identifying potential geologic hazards."

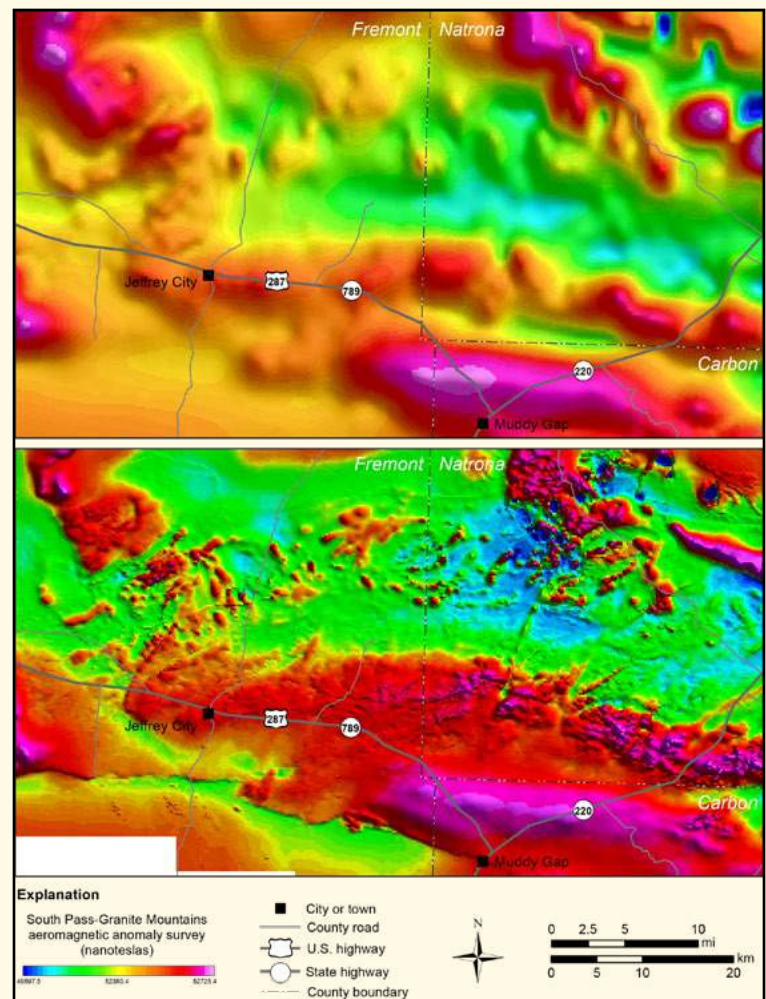
Geophysical investigations are an efficient way to detect rocks and trends across a large area and are a useful tool for helping understand an area's geology and mineral resources. Magnetic data record the intensity of the earth's magnetic field, and can be used to identify faults, compositional differences in neighboring rocks, and other geologic features at depths down to about 3,300 feet below the ground surface.

Radiometric data indicate the relative amounts of naturally occurring potassium, uranium, and thorium in shallow, near-surface rocks and soil.

This region has long been a target for mineral exploration, as historical mining has occurred across most of the survey footprint. More recently, active exploration in central Wyoming has focused on elements such as gold, copper, nickel, uranium, and lithium.

This survey was funded by the State of Wyoming and

contracted through the USGS Earth Mapping Resources Initiative (Earth MRI). Earth MRI is a partnership between the USGS and state geological surveys across the United States to modernize our understanding of the nation's fundamental geologic framework and knowledge of mineral resources. The USGS Earth MRI program has funded several other large aerial geophysical surveys in Wyoming, in both the Sierra Madre and Medicine Bow Mountains.



Map showing magnetic anomalies in the area of Jeffrey City and Muddy Gap. The top image shows existing low-resolution magnetics data that were collected decades ago. The bottom image is from the new, high-resolution magnetics dataset collected by the South Pass-Granite Mountains aerial geophysical survey. The South Granite Mountains fault system is marked by the linear feature running west from Muddy Gap. The Rattlesnake Hills volcanics are the blue circular features in the northeast corner of the map. WSGS map

(Continued on Page 7)

Critical Mineral Survey

(Continued from Page 6)

For more information on these surveys, as well as other Earth MRI projects in Wyoming and throughout the country, visit the Earth MRI Acquisitions Viewer.

Processed geophysical data for the South Pass-Granite Mountains survey can be downloaded through the USGS.

The survey covers an area of approximately 3,340 square miles and includes 29,810 line-miles of magnetic and radiometric data.

Data were collected from a helicopter flown at a terrain clearance of 330 feet above topography along north-south flight lines spaced at 650-foot intervals. Tie lines were flown in an east-west direction every 6,560 feet. Data were collected by New Sense Geophysics Ltd. and Merrick-Surdex Joint Venture under contract with the USGS using a helicopter equipped with a stinger-mounted magnetometer

and gamma-ray spectrometer.

The survey was funded and contracted in early 2023, and conducted out of the Rawlins and Lander airports from July through September 2023. Available files include flight line data and images for the magnetic and radiometric surveys and a report describing the survey parameters, field operations, quality control, and data reduction procedures.

Images of the magnetic and radiometric data are also viewable on the WSGS Mineral Resources interactive map.

For more information on ongoing WSGS minerals-related projects, see the WSGS current projects website. For more information on USGS mineral research, see the USGS Mineral Resources Program website or follow the USGS on X, formerly known as Twitter.



A helicopter equipped with a stinger-mounted magnetometer and gamma-ray spectrometer conducted flights last summer to collect critical mineral survey data. Photo courtesy of WSGS

[Back to Page 1](#)



Minerals of Wyoming

What is a mineral?

This year's WSMGS show theme is Wyoming's minerals.

When discussing minerals, rockhounds often think of images of exquisite crystals. There are however, an incredible variety of minerals that come in a myriad of sizes, habits, colors and lusters.

Minerals can have cryptocrystalline to massive crystals. Many expect minerals to have a glossy shine, but they can look earthy, dull and sometimes even brilliant (like a diamond).

Wyoming boasts many minerals, some stunning, some plain, some unusual, and some uncommon or rare, but all of them fascinating.

Rockhounds often use terms like rock and mineral interchangeably. Some would consider a piece of jasper or agate a rock because it is not crystalline.

Geologists see the issue differently. So, what exactly is a mineral?

As defined by the USGS: "A mineral is a naturally occurring inorganic element or compound having an orderly

internal structure and characteristic chemical composition, crystal form, and physical properties."

"Common minerals include quartz, feldspar, mica, amphibole, olivine, and calcite." (<https://www.usgs.gov/faqs/what-difference-between-rock-and-mineral>).

What rocks are not minerals?

In the same article, the USGS defines a rock as: "an aggregate of one or more minerals, or a body of undifferentiated mineral matter."

"Common rocks include granite, basalt, limestone, and sandstone."

"Sedimentary, metamorphic or igneous rocks are made up of one or more minerals. Some igneous rocks like obsidian are amorphous compounds that lack internal structure."

Jet, amber, gilsonite and other organic compounds aren't considered minerals. Mineral shops and collectors often these compounds minerals which would drive a geologist crazy.

Opal too is an amorphous compound that lacks internal structure but is often grouped with silica-rich minerals.

Minerals often misunderstood

Most rockhounds have more minerals in their collections than they realize. Many specimens referred to as "rocks" are minerals.

Is agate a mineral? Short answer is, yes. It is a variety of quartz. Likewise chalcedony, jasper, citrine, amethyst, rose quartz, milky quartz; smoky quartz, and the list goes on are all varieties of quartz and should be



Minyulite, found in Wyoming

labeled that way. (See the Quartz Page for a list of quartz varieties http://www.quartzpage.de/ovr_text.html.)

How about Wyoming Jade? Is it a mineral? No, it's actually a metamorphic rock type, nephrite, which is composed of microscopic crystal fibers of amphibole in the actinolite-tremolite mineral series along with trace to small amounts of other minerals. There is no mineral called jade. That is a gem and lapidary term.

Wayne Sutherland in his new book Wyoming Jade states: "Because true nephrite is composed of one mineral series, it is often described as though it was a mineral".

Nephrite has physical properties that are similar from one specimen to the next. Good quality specimens are largely microcrystalline amphiboles.

Since the impurities are hard to see, good quality specimens could be classified as a mineral.

Is Trona a mineral? Yes, is a non-marine evaporite mineral which is common in southwestern Wyoming. Other rare minerals like Eitelite, Thermonatrite, Shortite are found with it in the State's mines.

(Continued on Page 9)



Chalcopyrite, found in Wyoming

Minerals of Wyoming — What is a Mineral?

(Continued from Page 8)

Is Bentonite a mineral? No, it is a mixture of clay minerals formed by the alteration of volcanic ash in a marine environment and would be considered a rock.

Clay minerals themselves are not what most rockhounds think of when someone says mineral. They have very small crystals that are earthy and dull. They look like dirt but are minerals. Clays cannot often be distinguished from each other without laboratory methods so most rockhounds would group them as “clay minerals” or “clay.”

Mineral groups

A group of minerals is two or more mineral species having identical or closely related structures and chemical compositions.

Many minerals belong to groups with names familiar to the rockhound, though the individual mineral species in that group mostly likely have unfamiliar names.

One such group is Garnets. Most rockhounds know that name but are unfamiliar with the group members' names: almandine, pyrope, spessartine, uvarovite, grossularite, andradite.

This is often the case with other groups of minerals such as feldspars, amphiboles, micas, pyroxenes.

Sometimes these groups have varied chemical compositions in between “end members”. Laboratory methods are often required to identify the minerals species.

If the specific mineral species is not

known or unable to be determined with available tools, the rockhound or geologist may call a particular specimen by the group name (ie: an amphibole or a feldspar).

Discovering the minerals of Wyoming can be a lifelong adventure. There always seems to be something new and interesting.

Come to this year's Wyoming State Mineral and Gem show and discover some interesting minerals from Wyoming and around the world.

The following list, while not exhaustive, features both common, uncommon and rare Wyoming minerals. Have fun discovering Wyoming minerals.

(Continued on Page 10)



A large specimen of Zeolite with fine, hairlike crystal needles, found in Wyoming. JSN photo by Ilene Olson

Minerals of Wyoming — What is a Mineral?

(Continued from Page 9)

Wyoming Minerals

(Not a complete list)

Rock-Forming Minerals

Quartz

Crystalline Varieties

** Milky quartz (Miners called it bull quartz)

** Amethyst

** Rose quartz

** Citrine

** Rock Quartz (clear, transparent, colorless)

** Ferruginous Quartz

Cryptocrystalline Varieties

** Chalcedony

** Agate

** Jasper

*Feldspar Group

**K-spar Sub-Group*

Microcline

** Amazonite

Orthoclase

** Adularia

Sanidine

Plagioclase (a solution series)

Albite

Anorthite

Andesine

Labradorite

*Amphibole Group

Actinolite-Tremolite

**Cryptocrystalline Variety found in the rock nephrite (Wyoming Jade)

Horneblende

Grunerite

Crocidolite (Rebeckite)

*Serpentine Group

Chrysotile

Lizardite

Antigorite

*Pyroxene Group

Augite

Diopside

Spodumene

Enstatite

*Mica Group

Biotite

Fuchsite

Lepidolite

Muscovite

Phlogopite

Olivine

*Garnet Group

Almandine

Pyrope-almandine

Pyrope

Spessartine

Calcite

Dolomite

Gypsum

** selenite (clear crystals)

** satin spar

** alabaster

Other Wyoming Minerals

Common to Very Rare

Allanite

Ankerite

Anhydrite

*Apatite Group

Flourapatite

Hydroxylapatite (Dahllite**)

Aragonite

Andalusite

Arsenopyrite

Azurite

Autunite

Barite

Benjaminite^

Bertierite^

Beryl

** Emerald^

** Helidor^

** Aquamarine^

Bornite

Bournonite (Cog wheel ore)^

Carnotite

Coffinite

Chalcocite

Chalcopyrite

Chromite

Chrysocolla

Clinochore

**Kammererite (A variety of Clinoclore)

Clinoptilolite

Columbite-Tantalite

Cordierite (**Iolite)

Corundum

** sapphire^

** ruby^

Native Copper^

Covellite

Cuprite

Diamond^

Epidote

Euxenite^

Fluorite

Galena

Native Gold

Grandidierite^^

Graphite

Hematite

**Specularite— one of the varieties found in WY

Hemimorphite

Ilmenite

Ilsemanite^

Kyanite

Leucite^

“Limonite”

Manganese oxides

Manganite^

Magnetite

Marcasite

Mascagnite^^

Metatyuyamunitite

Minyulite^

Monazite

Molybdenite

Orpiment

Phenakite^

Native Platinum^

(Continued on Page 11)

Minerals of Wyoming — What is a Mineral?

(Continued from Page 9)

Realgar (Lorandite)
 Pectolite
 Psilomelane
 Pyrite
 Pyrrhotite
 Scheelite
 Schroeckingerite (Dakeite)^
 Serpentine Group
 Chrysotile
 Lizardite
 Antigorite
 Sheridanite^^
 Siderite
 Sillimanite
 Native Silver^
 Smithsonite^
 Sperrylite^
 Sphalerite
 Starolite
 Stromeierite
 Native Sulfur
 Talc
 Tenorite
 Tetrahedrite
 *Tourmaline Group
 Elbaite
 Schorl
 Trona (Other minerals related to
 Trona include Eitelite^,
 Thermonatrite^, Shortite^)
 Tschermigite^^
 Tyuyamunite
 Uraninite
 Variscite^
 Vermiculite
 Vivianite^
 Wulfenite
 *Zeolite Group
 Anaclime
 Clinoptilolite
 Natrolite
 Stilbite
 Thompsonite^
 Zoisite

** pink microcrystalline variety
 called Thulite

Note: Opal is amorphous and not considered a mineral. Amber, coal, asphaltum, gilsonite, ozokerite are organic compounds and not minerals. Bentonite is a mixture of clay minerals and considered a rock not a mineral.

Definitions:

*Mineral groups are 2 or more mineral species having identical or closely related structures. If the specific mineral species is not known or unable to be determined with available tools, they may be referred to with the group name (ie: an amphibole).

** A mineral variety is a variation in distinctive physical properties of a specific mineral species such as color, minor impurities, or habit. The different varieties of a given mineral species have the same base chemical composition.

^ Rare to extremely rare In Wyoming

^^ So rare, almost didn't make list

References:

• Root, F.K., 1977, Minerals and rocks of Wyoming: Geological Survey of Wyoming [Wyoming State Geological Survey] Bulletin 56, 84 p. (Revised from 1972.)

• Hausel, W.D., 1986, Minerals and rocks of Wyoming: Geological Survey of Wyoming [Wyoming State

Geological Survey] Bulletin 66, 117 p., 30 pls.

• Hausel, W.D., Root, F.K., Jones, R.W., and Albert, K.G., 1988, Guide to some rocks and minerals of Wyoming: Geological Survey of Wyoming [Wyoming State Geological Survey] Miscellaneous Publication, 30 p.

• Hausel, W.D., 2005, Minerals and rocks of Wyoming—A guide for collectors, prospectors, and rock hounds: Wyoming State Geological Survey Bulletin 72, 159 p.

• Hausel, W.D., and Sutherland, W.M., 2000, Gemstones and other unique minerals and rocks of Wyoming—A field guide for collectors: Wyoming State Geological Survey Bulletin 71, 268 p. (Reprinted 2014.)

• Nelson, Willis H., Prostka, Harold J., Williams, Frank E., Elliott, James E., Peterson, Donald L., 1980, Geology and mineral resources of the North Absaroka Wilderness and vicinity, Park County, Wyoming, USGS Bulletin 1447, U.S. Geological Survey, 101 p.

• mindat.org various pages referencing Wyoming mineral occurrences, accessed 10/2023 and 2/2024.

• Gregory L. Jones personal collection and knowledge

[Back to Page 1](#)



Calcite with scalenohedrons, also known as dogtooth calcite, found in Wyoming. JSN photo by Ilene Olson

2024 Rock Show Flyers

25th ANNUAL CHEYENNE MINERAL & GEM SHOW

MAY 18 -19 TH

SAT. 9AM - 5PM

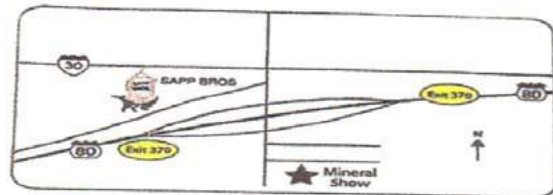
SUN. 9AM - 4PM

ADMISSION : \$3.00

CHILDREN 12 & UNDER FREE

EXHIBITS, JEWELRY
FOSSILS, MINERALS
SILENT AUCTION
DEALERS , CHILDREN AREA
FLINT KNAPPER
GRAB BAGS

**FREE ROCK SAMPLE
WITH PAID
ADMISSION**



Archer Complex - Building M
Just South of Exit #370 on I-80
6 mi. East of Cheyenne

HOSTED BY THE CHEYENNE MINERAL & GEM SOCIETY

SHOW INFORMATION : JAN SHIVELY 509-953-0634

FREE DINOSAUR COLORING BOOKS FOR KIDS

2024 Rock Show Flyers

(Continued from Page 12)



2024 Wyoming State MINERAL and GEM SHOW

May 30-31 & June 1**Powell, Wyoming****Park County Fairgrounds****12 and older: \$5 Per Day or \$10 for All 3 Days; Under 12 Admitted Free****Hours: Thursday and Friday, 10 a.m. to 6 p.m. • Saturday 9 a.m. to 5 p.m.****Theme: Minerals of Wyoming****Many Vendors****Rock I.D.****Kids' Activities****Raffle Prizes****Demonstrations****Educational Info****Silent Auction****Showcases****Find us Online: www.BigHornBasinRockShow.com****Facebook: 2024 Wyoming State Mineral and Gem Show****Hosted by Wyoming State Mineral and Gem Society,
The Shoshone Rock Club of Powell and The Cody 59ers Rock Club*****Powell, Wyoming, is 75 miles east of Yellowstone National Park. Come join us!*****Contacts: wyojones@wyojones.com • gilbertc@tctwest.net**

Attention Pebble Pups:
Saturday, June 1, is
Kids Day! We'll have
special activities,
door prizes and
presentations
just for you!
(Adults will have fun, too!)

2024 Rock Show Flyers

(Continued from Page 13)



**Sublette County Rockhounds
present their 8th annual**

Gem & Mineral

Show

June 14 - 16, 2024

Friday & Saturday, 9am - 5pm

Sunday, 9am - 3pm

Sublette Co. Fairgrounds

Event Center, 10937 Hwy 351

Big Piney, Wyoming

**Vendors: Opals, jade, jewelry, slabs, cabs, rough rock,
decorative items, fossils, specimens, & more!**

Demonstrators Raffles Exhibits Door Prizes

Mr. Bones Dinosaur puppeteer Kid's Activities

Contact: Jim Gray jimgray@wyoming.com or Mike Schaffer maschaffer61@gmail.com

2024 Rock Show Flyers

(Continued from Page 14)

**Friday May 31 &
Saturday June 1**



**POWELL VALLEY
COMMUNITY EDUCATION**



FREE Lecture Series

2024 Wyoming State Mineral and Gem Show

In Cooperation with Powell Valley Community Education

Homesteader Building, Park County Fairgrounds

Powell Wyoming

Friday May 31

3:00 PM Stan Groves, Phd
"An Introduction to Wyoming Minerals"

4:00 PM Ned Kelly
**"Catch and Release Rockhounding in
Yellowstone"**

Saturday June 1

10:00 AM Kids Workshop — Session 1 (Limit- 25 kids)
by Greg Jones and Members of the Cody 59ers Rock Club
**"How to Identify Common Rocks and Minerals
of the Bighorn Basin"**

11:00 AM Kids Workshop — Session 1 (Limit- 25 kids)
by Greg Jones and Members of the Cody 59ers Rock Club
**"How to Identify Common Rocks and Minerals
of the Bighorn Basin"**

1:00 PM Erik Kvale, Phd
"Hidden Secrets in the Jurassic of the Bighorn Basin."

3:00 PM Christopher Doorn, Phd
"Critical Minerals in Wyoming"



2024 Rock Show Flyers

(Continued from Page 15)

DOES YOUR CHILD LIKE ROCKS?



*Bring Them To Pebble Pups Day at the
Wyoming State Mineral and Gem Show*

June 1, 2024

Park County Fair Grounds, Powell Wyoming

9 AM-5 PM

[http:// www.bighornbasinrockshow.com](http://www.bighornbasinrockshow.com)



**POWELL VALLEY
COMMUNITY EDUCATION**



Club News



Shoshone Rock Club

Powell, Wyoming

Edna and Walter Scott were very active in the Shoshone Rock Club. Walt served as president, and they both volunteered for many activities and events. Walt died in 1996, but Edna continued with the club until she moved to Montana in 2000. Edna now lives in Worland, where she observed her 108th birthday in November. Featured below are a few photographic memories of the Scotts' many years in the Shoshone Rock Club.



Edna and Walt Scott when they joined the club in 1965.



Edna Scott led a lapidary jewelry workshop at her home in 1997.



Walt and Edna Scott designed this showcase for a rock show in the 1970s. Photos from Shoshone Rock Club archives

(Club News continued on Page 18)

Club News

(Continued from Page 17)

Shoshone Rock Club

(continued)

Dryhead Agates featured in Club's March Presentation



Dave Gillard of Cody (left) points to a slide during his talk about Dryhead Agates at the Shoshone Rock Club's March meeting. On the right is an unusually large specimen of Dryhead Agate that Gillard bought for his collection. JSN photos by Ilene Olson

Dave Gillard, a member of the Cody 59ers Rock Club, gave a presentation about Dryhead Agates during the Shoshone Rock Club's March 19 meeting in Powell. He said Dryhead Agate got its name from the Dryhead Creek. The river was named when explorers found a buffalo jump in the area, with buffalo skulls (dry heads) lining the area below the jump.

Gillard said most of the agates found today are fist size or smaller. They typically consist of red, white and gray agate encased in matrix, with some featuring blue agate as well. All Dryhead agate fluoresces under UV light due to a small amount of uranium within them, he said.



Ned Kelley pictured near his home with a large specimen of Analcime. Photo courtesy of Ned Kelley

Kelley talks about hunting minerals west of Cody and the danger he faced while collecting them

In February, Ned Kelly gave a presentation about minerals he found on Rattlesnake Mountain west of Cody. The specimens he had on hand and those he featured in a slideshow are beautiful. But, due to the inherent danger in that mountain formation, Kelley said he will never hunt there again. The minerals are on a ledge, and the rock is unstable.

Ned told of his last excursion up there, when he reached above his head to grab a mineral specimen about the size of his fist. When he removed it, an 8-foot wall of rock shifted and began moving toward him. Just as he was sure he was going to die, something caused the rock shelf to stop moving. That was the second time he had a near-death experience in the same area.

"That place tried to kill me twice," he said. "I won't go back there again."

Ned Kelley will give a presentation, "Catch and Release Rockhounding in Yellowstone," during the Wyoming State Gem and Mineral Show on Friday, May 31, in Powell. The show runs from May 30-June 1.

[Back to Page 1](#)


WSMGS Rock Clubs

Riverton Mineral & Gem Society

P.O. Box 1904
Riverton, WY 82501
rivertonmgs@wsmgs.org
www.RivertonMGS.com
Meets 2nd Monday, 6:00 p.m.
(September-May)
Senior Center
303 E. Lincoln, Riverton
President: Kim Putnam
Vice-President: ..Maggie Gowen
Secretary: Aubrey Schmerge
Treasurer: Molly Fauth
Field Trips..... Steve Shanor

Cody 59ers Rock Club

P.O. Box 1251
Cody WY 82414
cody59ers@wsmgs.org
www.Cody59ers.com
Meets 4th Thursday, 6:30 p.m.
(September-May)
Game & Fish building,
2 Tilden Trail (off the Belfry Hwy)
President: Greg Jones
Vice-President: Dave Gillard
Treasurer: Audrey Smith
Secretary Nella Flurkey
Historian: Stan Strike
Field Trips Greg Jones

Shoshone Rock Club

P.O. Box 256,
Powell, WY 82435
shoshonerockclub@wsmgs.org
Meets 2nd Tuesday, 6:30 p.m.
Eternal Ice,
894 Lane 11 1/2, Powell
President: Gary Olson
Vice-President: Elyse Lynn
Treasurer: Lara Myers
Secretary: ... Charis Cervantes
JSN: Ilene Olson
Historian: Linda Jennings
Field Trips: Open

Cheyenne Mineral & Gem Society

P.O. Box 21412
Cheyenne, WY 82003
cheyennemgs@wsmgs.org
Meet 2nd Wednesday, 7 p.m.
(August-May)
IBEW Union Building
810 Fremont Street — Cheyenne
Acting President: ..Jan Shively
Vice President Mike Ryan
Treasurer: Jan Shively
Secretary: Don Harris
Field Trip Mark Shively

Sublette County Rock Hounds Club

P.O. Box 1351
Big Piney, WY 83113
subletterockhounds@wsmgs.org
Meets 3rd Saturday, 1 p.m.
(April-December)
SW Senior Center,
429 E. 1st St., Marbleton
Call to confirm: (307) 260-6442
President: Jim Gray
Vice-President: Mike Schaffer
Treasurer: Leane Gray
Secretary: Deb Jess
Field Trips... Roger McMannis

Rex Young Rock Club

112 East 3rd
Lingle, WY 82223
rexyoungrockclub@wsmgs.org
Meets 2nd Wednesday, 7:00 p.m.
Senior Center
216 E. 19th Ave., Torrington
President: Kim Nielsen
Vice-President: Ed Verplancke
Treasurer: ..Joyce Trowbridge
Secretary: ...Joyce Trowbridge
JSN: Joyce Trowbridge
Historian: ...Joyce Trowbridge

Natrona County Rockhounds

P.O. Box 123,
Casper, WY 82644
natronarockhounds@wsmgs.org
Meets 1st Monday, 7 p.m.
(April-December)
Shop Open 6-8 p.m. Tue & Fri
at Clubhouse, 5211 Rambler, Mills
President: Martin "Mac" Goss
Vice-President: Renee Stewart
Treasurer: Ken Platte
Secretary: Kim Platte

Converse County Rock Hounds

conversecountyrockhounds@wsmgs.org
Meets 3rd Sunday, 4 p.m.
MHCC Conference Room,
111 S. 5th St., Douglas
President: Gary Haptonstall
Vice President: Jo Teal
Secretary: Chris Berendes
Treasurer: Chris Berendes

Northeast Wyoming Rockhounds

Gillette WY 82716
newyrockhounds@wsmgs.org
Meets odd # months
Check email for dates
President: Dennis Brown
Vice-President: Bill Palone
Treasurer: Open
Secretary: Open
Field Trips Jeff Bennett



WSMGS Electronic Board Meeting

January 2024

I. Electronic Meeting Instructions to Board Members:

As a WSMGS Board Member, I ask you to read this Electronic Meeting email and VOTE on all Action Items by selecting "Reply All" after typing your name and indicating a "Agree or Disagree" vote for each numbered Action Item. The Deadline for your responses by "Reply All" email will be Monday, October 22, 2023. If you have questions about any item call, text, or email me at 307-260-6442 or pres@wsmsg.org Board members are encouraged to submit old or new business items that have not been included in this meeting and a special attachment will be sent out for the entire WSMGS Board's consideration.

II. President's Report by Jim Gray:

A. Welcome to the Converse County Rock Hounds club and to the returning NE Wyoming Rock Hounds club.

B. WSMGS 2024 Annual Show will be hosted by Shoshone Rock Club at the Park County Fairgrounds. The Show will be May 30, 31 and June 1, 2024. The Cody 59ers will be assisting Shoshone with this show.

a. State clubs in the past have helped the club doing the state show by donating tumbled rock, rock for their silent auction, cash donation to help with advertising, etc. So, if your club wants to help Powell/Cody let them know so they can plan.

b. WSMGS will have a sales table at the STATE show. We are asking for donations in the form of rock, used equipment, whatever you have that can be sold to help fund the WSMGS would be greatly appreciated, this is the only WSMGS fund raiser.

C. If any Club has any questions, concerns, or needs please let me know and I will do my best to help.

D. Obituary page in the Jade State News: Please submit the information for this page as they happen to pres@wsmsg.org.

E. The passing of our members is reported at the annual RMFMS convention by the Wyoming State Director, Leane Gray, August 1st, 2024. That being said, report all members who have passed since June 2023.

F. The annual submissions for the Rock Hounds of the Year (ROY) awards are due by April 1st. Send your nominations to Jim Gray at pres@wsmsg.org or by mail to Jim Gray PO Box 1351 Big Piney, WY 83113. It is very important to be timely with submissions as the annual show is the end of May this year, and certificates and plaques need to be done. I will be sending out the forms April 1, 2024.

G. Since I have been elected Vice President of the RMFMS, I will not be able to be the Wyoming State Director for the RMFMS therefore, Leane Gray will complete my next two years as the Wyoming Director. I can remain President of the WSMGS. Next elections are 2025.

H. If there are any State Officers who would like to help me with the WSMGS tables at the State show in Powell, please let me know. Or club members.

I. The WSMGS would like to encourage clubs to nominate non-club members (individuals or couples) from your region who have been active in promoting the Earth Sciences to be recognized in the Jade State News as Wyoming Rock Stars! Check out former winner write-ups on the WSMGS website: wsmsg.org-Menu-WSMGS Topic Library-WSMGS Awards. Rock Star Nominations: please submit these nominations with a descriptive paragraph and photo to the WSMGS President at pres@wsmsg.org. There is not an award associated with the nominations; it is a recognition in the form of an article in the Jade State News.

III. Vice President's Report by Linda Richendifer:

A. Please submit any changes in the WSMGS membership directory to Linda and Jim. This directory is not to be copied or shared outside the club membership. The updated membership directory will be compiled for submission to the RMFMS for their annual directory by Feb 1, 2024. Clubs need to get any updated officer and email address changes to Linda and Jim ASAP.

IV. Secretary's Report By Leane Gray:

A. Prior Electronic WSMGS Board Meeting Minutes are printed in the Jade State News, which are available online: wsmsg.org under the heading Newsletters.

(Continued on Page 21)

WSMGS Electronic Board Meeting

(Continued from Page 18)

V. Treasurer's Report by Mac Goss:

A. WSMGS Club Report Reminders

a) January 1st to May 15th- Form 990N must be electronically submitted to the IRS (The Registered agent for each club should receive this form from the IRS in advance of the deadline). Clubs may contact the IRS directly by email: la2.alt.www4.irs.gov/pub/rup_login_1

B. Deadline for Annual Report to WY Sec. of State Varies by WSMGS Club -- Deadline for renewal of "Non Profit Corporation Annual Report" varies by club and is due the 1st day of the month in which the club was first recognized by the Wyoming Secretary of State as a Non Profit Corporation.

(The Registered Agent for your club should receive this form in advance of the club's deadline.)

WSMGS Clubs' Incorporation Dates:

- Cheyenne Mineral & Gem Society —December 2, 1969
- Cody 59ers Rock Club — February 1, 2012
- Converse County Rock Hounds
- Natrona County Rock Hounds — April 15, 1954
- Rex Young Rock Club — Not Incorporated
- Northeast Wyoming — November 8, 2018
- Riverton Mineral & Gem Society — August 17, 2012
- Shoshone Rock Club — February 8, 1962
- Sublette County Rock Hounds — March 21, 2018
- WSMGS Board Incorporated November 23, 1964

C. The current Treasurer's Report can be found on Page 22.

VI. Historian Report by Roger McMannis:

VII. Jade State Newsletter by Ilene Olson:

A. Clubs are encouraged to submit news items, articles, abbreviated minutes, and photos for publication in the Jade State News.

- a. Submission dates to Jade News Editor [jsn@wsmsg.org]

org] are the 1st of February, May, August, and November.

VIII. WSMGS Website

A. The WSMGS needs Action Photos from each of your clubs. Please include the photographer's name for proper photo credit and a short caption summary as to activity. Send photos to: pres@wsmsg.org

IX. Old Business:

A. WSMGS Club Shows, 2024

Cheyenne, May 11-12, 2024

Shoshone /Cody 5ers, WSMGS Show May 30-31 & June 1, 2024

Sublette, June 14-15-16, 2024

Natrona, July 12-13, 2024

NE Wyoming, October ??? Will post as soon as date is available.

X. New Business:

*** VOTE Action Item #1-

Pay Jade State News Editor \$75.00 for supplies etc for the Jade State News Letter.

Vote Yes: Four votes in favor, one abstained

Vote No:

*** VOTE Action Item #2- Web Master \$50.00 gift recognizing her contribution to WSMGS

Vote Yes: Five votes in favor

Vote No:

*** Vote \$500.00 for a scholarship to a second-year Wyoming college student studying geology, earth sciences or related field selected by the Shoshone Club for the WSMGS show for 2024, as voted on and passed at the 2023 WSMGS Annual Meeting in Casper.

Vote Yes: Five votes in favor

Vote No:

X. Meeting adjourned — Monday, January 28, 2024.

(Continued on Page 22)



WSMGS Electronic Board Meeting

(Continued from Page 21)

Treasurer's Report:

<u>ACTION</u> <u>Deposit, Check #,</u> <u>Fee</u>	<u>DATE</u>	<u>DESCRIPTION</u>	<u>EXPENSE,</u> <u>PAYMENT</u>	<u>Cleared</u> <u>Bank?</u>	<u>REVENUE,</u> <u>DEPOSIT</u>	<u>RUNNING</u> <u>BALANCE</u>	<u>1A</u>
Debit Card	9/8/2023	Wyoming Secretary of State, annual filing	\$ 27.00	x		\$ 3,162.79	
Deposit	10/16/2024	Deposit – donation by Jim Gray toward July fuel to Casper		x	\$ 100.10	\$ 3,262.89	
Debit Card	10/13/2023	Web I-Page	\$ 20.99	x		\$ 3,241.90	
Debit Card	10/25/2023	Target Store – gift cards for Marlene Sibley	\$ 161.00	x		\$ 3,080.90	
No Activity	11/30/2023	No activity in November		x		\$ 3,080.90	
Deposit	12/15/2023	WSMGS dues: Natrona, NE Wyo, Riverton, Sublette		x	\$ 858.00	\$ 3,938.90	

Code of Ethics

American Federation of Mineralogical Societies

I will respect both private and public property and will do no collecting on privately-owned land without permission from the owner.

- I will keep informed on all laws, regulations or rules governing collecting on public lands and will observe them.

- I will, to the best of my ability, ascertain the boundary lines of property on which I plan to collect.

- I will use no firearms or blasting material in collecting areas.

- I will cause no willful damage to property of any kind such as fences, signs, buildings, etc.

- I will leave all gates as found.

- I will build fires only in designated or safe places and will be certain they are completely extinguished before

leaving the area.

- I will discard no burning material — matches, cigarettes, etc.

- I will fill excavation holes which may be dangerous to livestock.

- I will not contaminate wells, creeks, or other water supplies.

- I will cause no willful damage to collecting material and will take home only what I can reasonably use.

- I will practice conservation and undertake to utilize fully and well the materials I have collected and will recycle my surplus for the pleasure and benefit of others.

- I will support the rockhound project H.E.L.P. (Help Eliminate Litter Please) and will leave all collecting areas devoid of litter, regardless of how found.

- I will cooperate with field-trip leaders and those in designated authority in all collecting areas.

- I will report to my Club or Federation Officers, Bureau of Land Management or other authorities, any deposit of petrified wood or other materials on public lands which should be protected for the enjoyment of future generations for public educational and scientific purposes.

- I will appreciate and protect our heritage of natural resources.

- I will observe the "Golden Rule," will use Good Outdoor Manners and will at all times conduct myself in a manner which will add to the stature and Public Image of Rockhounds everywhere.

[Back to Page 1](#)


Rock Shops in Wyoming

Casper

Rick's Rocks

511 South Melrose Street

Casper, WY 82601

(307) 265-7625

Facebook:

caspermonumentsandricksrocks

Storefront: Mon – Fri 9-5,

closed 12-1

Engraved memorials and river rocks

Wonder!

1825 Cy Avenue

Casper, WY 82601

(307) 268-8732

Facebook: Wonder!

Storefront – regular hours

Metaphysical products and books

Cheyenne

Bohemian Metals

314 West 17th Street

Cheyenne, Wyoming 82001

(307) 778-8782

Facebook: Bohemian Metals

Store Front: Tue – Sat 10-6

Jewelry, minerals, fossils, crystals, beads,
rough rock, slabs, and teaching studio

Evanston

Antares Fossils & Minerals

431 Front Street

Evanston, Wyoming 82930

(307) 789-8737

Facebook: Antares-Fossils-Minerals

Storefront – regular hours

Gillette

Rocks to Riches

1758 US – 14

Gillette, WY 82716

(307) 670-8011

Kemmerer

In Stone Fossils

413 Coral Street

Kemmerer, WY 83101

(307) 723-1141

www.instonefossils.com

Facebook: In Stone Fossils

Storefront – Mon – Sat 8-5

Wyoming Fossils

921 Pine Avenue

Kemmerer, WY 83101

(254) 223-3204

www.wyomingfossils.com

Facebook: Wyoming Fossils

Storefront – regular hours

Ulrich's Fossil Gallery

4400 Co Rd 300

Kemmerer, WY 83101

(307) 877-6466

<https://ulrichsfossilgallery.com/>

Facebook: Ulrich's Fossil Gallery

Storefront – Regular hours

Kinnear

R&G Rock and Doll Shop

Linda Richendifer

10709 US Hwy 26

Kinnear, WY 82516

(307) 856-1532

Storefront – by appointment only

Porcelain dolls, rocks, jewelry, rock-
related items

Marbleton / Big Piney

J L Gray Rock Shop

614 E. 3rd Street

Marbleton, Wyoming 83113

(307) 260-6443

Facebook: Friends Who Like J L Gray

Rock Shop

& J L Gray Rock Shop

Storefront – March to Dec 15, Mon –

Fri 9 – 4

Some weekends & by appointment

Rough rock, slabs, cabs, specimens,
fossils, jewelry, beads, books, rock-
related gifts, equipment dealer, lapidary
supplies, classes

Powell

Stone Age Industries

Bill and Linna Beebe

654 Lane 5

Powell, WY 82435

(307) 754-4681; (888) 331-7625

www.stoneageindustries.com

Facebook: StoneAgeIndustries

Store by appointment & online

shopping

Equipment, rocks, gems, grit, polish,

lapidary supplies

Riverton

Rock Solid Lapidary

Melvin and Alice Gustin

518 E. Main Street

Riverton, WY 82501

(307) 856-1388

<https://rocksolidlapidary.com>

Facebook: rocksolidlapidary

Storefront – regular hours

Rocks, beads, rock-related gifts, classes

Star Valley

Star Valley Rock Shop

Fairview, WY 83119

(307) 886-4334

Storefront – Mon – Sat 10 – 5

www.quartzeclipse.com

Thermopolis

Ava's Silver & Rock Shop

631 Shoshone Street

Thermopolis, WY 82443

(307) 864-3800

Facebook: Ava's Silver & Rock Shop

Storefront – Regular hours, closed

Wed.

Torrington

Torrington Rock Shop

4102 US Hwy 26 / 85

Torrington, WY 82240

(307) 532-5938

www.torringtonwyrockshop.com

Facebook: TorringtonRockShop

[Back to Page 1](#)

