

Jade State News

Wyoming State Mineral & Gem Society, Inc.

2132 Gail Lane, Cody Wyoming 82414

Volume 2017, Issue 3



WSMGS OFFICERS

President: George Tillman
pres@wsmgs.org

Vice President: Linda Richendifer
vpres@wsmgs.org

Secretary: Carla Tillman
sec@wsmgs.org

Treasurer: Stan Strike
treas@wsmgs.org

Historian: Rod Baltes
hist@wsmgs.org

Jade State News Editor: Jennifer Flowers
jsn@wsmgs.org

RMFMS State Director: Stan Strike
wydir@wsmgs.org

RMFMS WY PLAC Representative:
Rich Garow

The WSMGS conducts meetings quarterly
and as special events require

2017 WSMGS STATE SHOWCASE WINNERS

Photos by Holly Skinner,
Linda Arichendifer, & Jim McGarvey of
Riverton Mineral & Gem Society



Rex Young Rock Club, Torrington, WY
1st in Judging, 2nd in Peoples Choice

continued on page 2

WSMGS Showcase winners	Pages1-2
Rockhounds of the year	Pages3
WSMGS Info & Updates	Pages5-8
Eden Valley Fish Fossils	Pages9-12
DIY Slab Easels	Page 13
Club Field Trips, News, Reports	Pages14-17
Rock Show Flyers	Pages 17
WSMGS Directory & Officers	Page18

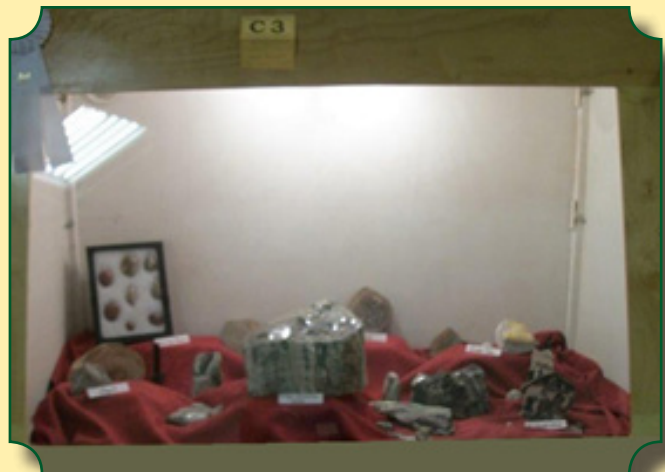
2017 WSMGS STATE SHOWCASE WINNERS

continued from page 1

CLUB SHOWCASES



Riverton Mineral & Gem Society, Riverton WY
1st in Peoples Choice, 2nd in Judging,



Sublette County Rock Hounds Club Big Piney WY
1st in Judging,



Cody 59ers Rock Club
3rd Peoples' Choice / Judging tied 4th



Shoshone Rock Club
Judging tied 4th

2017 WSMGS STATE SHOWCASE WINNERS

continued from page 2

AMATEUR SHOWCASES



Linda Richendifer, Riverton, Wy
1st in Amateur Judging



Bob Carlson
2nd in Amateur Judging



EDUCATIONAL SHOWCASES

PROFESSIONAL SHOWCASES



Stan Grove, Riverton, Wy
1st in Educational Judging



JL Gray Rock Shop, Big Piney, Wy
1st in Professional Judging



WSMGS Clubs Rockhounds of the Year



Bob Carlson, Rockhound of the Year
Riverton Mineral and Gem Society, Riverton



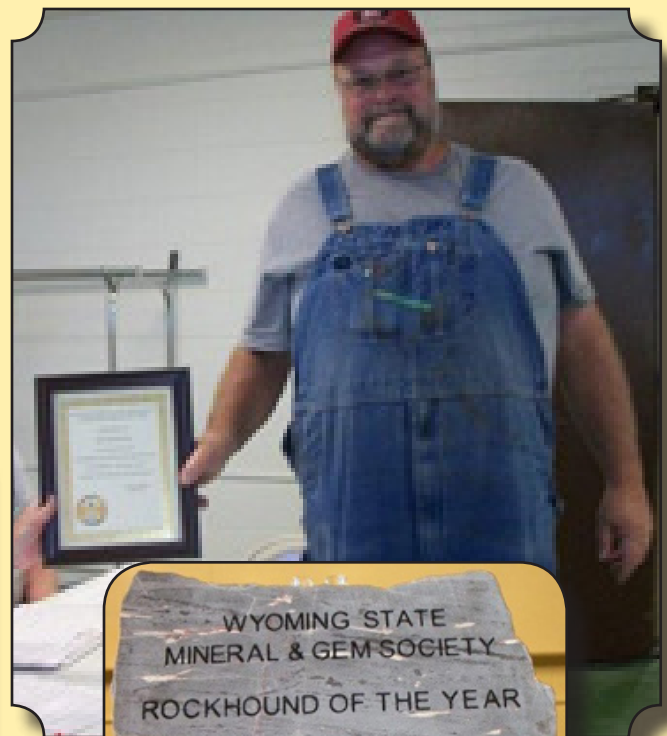
Linda Thomas, Rockhound of the Year
Shoshone Rock Club, Powell, WY



Roger McMannis, 2017 rockhound of the Year
Sublette County Rockhounds Club
Big Piney, WY. Accepted by Jim Gray



WSMGS State Rockhound of the Year



WSMGS BOARD INFORMATION & UPDATES

UNAPPROVED WSMGS ANNUAL MEETING MINUTES
 FREMONT COUNTY FAIRGROUNDS -- RIVERTON JUNE 23, 2017

- I. ROLE CALL- All WSMGS affiliated clubs represented by delegates except Cheyenne
- II. SECRETARY’S MINUTES-6/24/16 MINUTES approved as read by secretary Carla Tillman
- III. ANNUAL TREASURER’S REPORT –Treasurers report approved as read by treasurer Melvin Gustin:
 Treasurer’s Report-June 1, 2017:

Beginning Annual Meeting Balance- June 1, 2016 \$2,489.96
 (See quarterly Financial Reports to date in Jade State News:August 2016, November 2016, February 2017, May 2017

Beginning Balance-April 1, 2017 =		\$2175.54
Credits:	5-3-17 Natrona County Rockhounds Dues	\$35.00
Total Credits =		\$35.00
Expenses:		
04/06/17	Debit CodyUSPS-postage JSN	(\$3.75)
05/ 01/17	1045 Stan Strike-mileage2017 RMFMS	(\$104.44)
05/ 11/17	Debit Walmart-award certificates/frames	(\$25.57)
05/ 18/17	1047 Jennifer Flowers-May JSN/SpringFling	(\$75.00)
05/ 22/17	1049 Blue & Gold-award ribbons/engraving	(\$99.69)
05/ 25/17	Debit Main Street checks by WY Comm.Bank	(\$22.38)
Total Expenses =		(\$330.83)
Ending Balance-May 31, 2017 =		\$1,879.71

IV. REPORTS:

- A. MINERAL & GEM SHOW UPDATES were discussed by Alice Gustin-2017 WSMGS show chair
- B. ANNUAL MEMBERSHIP REPORT was given by vice president-Linda Richendifer
 - 1. October 31, 2016 WSMGS Membership Totals: 627 total members in our 7 Clubs
 - 2. Feedback discussion of use of Club Contacts and WSMGS website communications.
 - 3. Suggestions for formation of new clubs- (Gillette, Thermopolis)?
- C. ANNUAL HISTORIAN REPORT (ROD BALTES)
 - 1. Individual Clubs complying with Annual Reports for Archival Storage?
 - 2. 80 Year Old Celebration! [See wsmgs.org-Newsletters-WSMGS-February 2015)
- D. JADE STATE NEWS (EDITOR-JENNIFER FLOWERS)
 - 1. Club News Due August 1st. SEND TO “jsn@wsmgs.org”
 - 2. The Jade State Newsletter received several recognition awards at the 2017 RMFMS:
 - 2nd- (Written Features) “The Revenant Fossils” by Stan Strike (WSMGS)
 - 3rd- (Adult Articles-Humor) “Rockhounding in New York City”Bill Tabacinski (59ers)
 - 3rd- (New Editor) Jennifer Flowers (Natrona County Rockhounds)
- E. RMFMS WY STATE DIRECTOR
 - 1. 2017 RMFMS Convention –See Convention Summary: May 2017 JSN-p.13
 - 2. See attached sheet for RMFMS WY State Director’s 2016-17 Report
 - 3. Thank You to the WSMGS affiliated clubs for your 100% RMFMS Convention Proxy Response

WSMGS BOARD INFORMATION & UPDATES *continued*

4. 2018 RMFMS Convention & Rock Show has not been confirmed-watch for RMFMS updates

F. WSMGS WEBSITE [wsmgs.org]

1. iPAGEWeb hosting renewed until 3/16/2020

2. domain name renewal: wymineralandgemsociety.org (3/13/2017)= Expired
 wygemandmineralsociety.org (**3/4/2018)=Manual Nonrenewal

3. New domain name purchase: wsmgs.org (Renewed until 10/30/2018)

4. WY Bucking Horse & Rider used for WSMGS logo/trademark renewed to 6/30/2019

5. At the 2017 RMFMS Awards banquet the Wyoming WSMGS website received a 1st Place in the Website category competition. Our WSMGS website (wsmgs.org) will be forwarded to the AFMS competition and compete against the other six AMFS regions. Congratulations to our Webmaster-Marlene Sibley.

G. WY RMFMS PUBLIC LANDS ACCESS COMMITTEE REPORT [PLAC]-RICH GEROW

1. Status of Federal Land Management in WY discussed.

2. New Federal Regulations affecting rockhounds are under review and have not been finalized

V. OLD BUSINESS

A. WSMGS is 501(c)(3) organization and is state tax exempt for \$'s collected at State Show and deposited in state bank account, however WY Dept. Of Revenue has ruled that individual clubs are not exempt for money collected and deposited.

B. Nominations and Voting on annual \$100 museum award = Homesteader Museum in Powell

C. Thank You-from WY State 4-H Foundation for \$50 donation to 2017 Overall Geology winner at 2017 WY State Fair

D. Recently an email was sent to the Riverton Mineral and Gem Society from an individual in another WSMGS rock club, who was also a member of the Riverton Club, concerning what they perceived as advertising of an upcoming field trip's stated purpose as to illegal collecting on federal land. This individual also was reported to have notified the federal agency as to the Riverton Club's intentions. It was appropriate for this individual to express their concern to the Riverton club BUT NOT APPROPRIATE for that individual to notify a federal agency without consulting with the Riverton Club to clarify the perceived infraction.

These kinds of concerns need to be reported directly to the WSMGS Board for "in-house" Mediation. Individuals who deliberately disrupt the purpose of WSMGS without justifiable and factual cause will be subject to our ByLaws: Article III-Section 7, as stated below.

E. The WSMGS Board continues to focus on monitoring WSMGS affiliated clubs' compliance with legal reporting as nonprofit corporations as to current Articles of Incorporation & ByLaws and adherence to WY State Laws. WSMGS affiliated clubs failing to comply with the WY Secretary of State and Wyoming state laws are a legal liability to their members and the WSMGS and thereby will be subject to the WSMGS' ByLaws: Article III-Section 7: Removal of Members for Cause. If it happens that an WSMGS Member Club or an individual in a WSMGS Member Club fails to comply with the qualifications of membership or commits a deliberate act that is harmful to the WSMGS, they will receive a certified notification by the WSMGS Board explaining the violation and that it may result in the suspension or termination of their membership. The Member Club or individual will be afforded due process to defend their innocence as to the violation. The WSMGS Board will then formally vote as to the recommendation to suspend or terminate their membership. If 66% or more of the WSMGS Board members vote to suspend or terminate the membership, the member club and/or the individual will receive a certified notification as to the WSMGS Board's decision.

WSMGS BOARD INFORMATION & UPDATES *continued*

VI. NEW BUSINESS

A. Approved Bids for WY State Mineral and Gem Shows:

1. Sublette County Rock Hounds will sponsor 2018 WSMGS State Show
2. Natrona County Rockhounds will sponsor 2019 WSMGS State Show

B. Nominations & Election Of Officers (2 year terms)

President: George Tillman Vice President: Linda Richendifer
 Secretary -Carla Tillman Treasurer: Stan Strike
 Historian- Rod Baltes

C. Awards

1. CLUB Rockhound of the Year nominees were awarded plaques:

Cody 59ers Rock Club-Stan Strike
 Shoshone Rock Club-Linda Thomas
 Riverton Mineral & Gem Society- Bob Carlson Jr.
 Sublette County Rockhounds- Roger McMannis

2. Announcement of State ROY & presentation of award to Bob Carlson Jr.

VII. Upcoming Mineral & Gem Shows (see wsmsg.org –Rockhounding WY-upcoming Events)

Casper- 70th Annual Gem & Mineral Show July 8th-9th, 2017

Big Piney-Solar Eclipse Rock Show-August 18-20, 2017

VIII. Adjournment



Wyoming RMFMS State Director's Report By Stan Strike 2017 RMFMS Convention - Albuquerque, NM

The Wyoming State Mineral And Gem Society, Inc. (WSMGS) Board consists of six members who conduct electronic meetings quarterly. The WSMGS presently has seven affiliated clubs in Casper, Cheyenne, Cody, Marbleton, Powell, Riverton, and Torrington.

The WSMGS Board provides the following benefits for its WSMGS affiliated clubs:

- Conducts Annual Meeting for delegates representing WSMGS affiliated clubs;
- Promotes communication between WSMGS clubs with Membership Directory;
- Coordinates the annual WSMGS State Mineral & Gem Show (designates a host club, organizes judging of display cases, promotes show advertising, provides recognition awards, provides WSMGS trailer & contents, and secures RMFMS liability insurance);
- Publishes the Jade State Newsletter quarterly with WSMGS news updates, educational earth science articles, lapidary techniques, and WSMGS Affiliated Club News;
- Provides a WSMGS website(wsmsg.org) that provides WSMGS affiliated club information, WSMGS forms/documents, and educational topics related to rockhounding;
- Archives historical records for WSMGS affiliated clubs;
- Forwards RMFMS & AFMS communications to WSMGS clubs;
- Maintains alias email addresses to protect WSMGS club & board members' privacy;
- Allows WSMGS clubs use of WSMGS' 501(c)(3) status for WSMGS approved purchases;
- Provides reminders concerning required state, federal, WSMGS, and RMFMS deadlines.

WSMGS is a member of the American Federation of Mineralogical Societies (AFMS) and the Rocky

Wyoming RMFMS State Director's Report By Stan Strike 2017 RMFMS Convention - Albuquerque, NM continued

Mountain Federation of Mineralogical Societies (RMFMS).

1. The WSMGS total affiliated membership as of October 31, 2016 was 627 members-an annual increase of 77 members. Two clubs had a decrease in membership-Natrona County Rockhounds and Cody 59ers Rock Club. The newly formed club-the Sublette County Rock Hounds- began this membership year (October 2016) with a total of 103 members!
2. On June 4, 2016, 39 people met in Marbleton, WY and formed the Sublette County Rock Hounds. The WSMGS was instrumental in providing the leadership, information, and suggestions to promote this new club. Story-wsmgs.org-Newsletters-August 2016.
3. The WSMGS will continue to encourage the collection and archiving of copies of all WSMGS affiliated clubs' legal documents and in their absence the WSMGS Board will help to develop updated or new documents. The WSMGS will also continue to remind and monitor their WSMGS affiliated clubs/societies that they complete the required Wyoming State and IRS reporting.
4. The WSMGS has forwarded to our affiliated clubs at- wsmgs.org communications from RMFMS President Beth Simmons and PLAC Chairmen concerning the proposed revisions to the Paleontological Resources Preservation- Rule: 81 FR 88173 and encouraged comments to be submitted. See a summary on the WSMGS website-wsmgs.org-Newsletters-February 2017.
5. WSMGS communicated to our affiliated clubs a "help & suggestion" document to successfully register with the IRS (new requirement for 2017) and complete the required IRS 990-N form. See a summary on the WSMGS website-wsmgs.org-Newsletters-February 2017.
6. 2017 Wyoming Mineral and Gem Shows (details: wsmgs.org-Rockhounding WY-upcoming Events):

Cheyenne Mineral & Gem Society	May 13-14, 2017
Riverton Mineral & Gem Society (State Show)	June 24-25, 2017
Natrona County Rockhounds	July 8--9, 2017



2017 RMFMS AFMS Contest Winners

2017 AFMS Website Contest Winner:
10th Place-Marlene Sibley-WSMGS-wsmgs.org

2017 AFMS Bulletin Editors' Contest Winner:
4th Place-New Editor Division-Jennifer Flowers-
WSMGS-Jade State News



Vol. 2, No. 5 **ROCKHOUND** October, 1973

EDEN VALLEY'S FOSSIL FISH



By **SALLY A. PERKINS**



Digging into the layered shale is dirty work, but it can be rewarding. Sometimes two or more fish are found on the same side of a single sheet of shale.

The famous Kemmerer fossil fish bed in Wyoming is now closed, but Eden Valley offers the 'fossilhound' wider variety

The famous Kemmerer fossil fish bed in Wyoming is now closed to the public, but Eden Valley produces specimens every bit as valuable as the Kemmerer fish. The bed in Eden Valley, moreover, contains four different kinds of fish.

In July 1972, Joyce and Alfred Losh, who own the L & W Rock Shop on Highway 28 near South Pass City, Wyoming, introduced my husband and me to the Eden Valley area. They showed us their fossil fish collection to give us an idea of what we should find there.

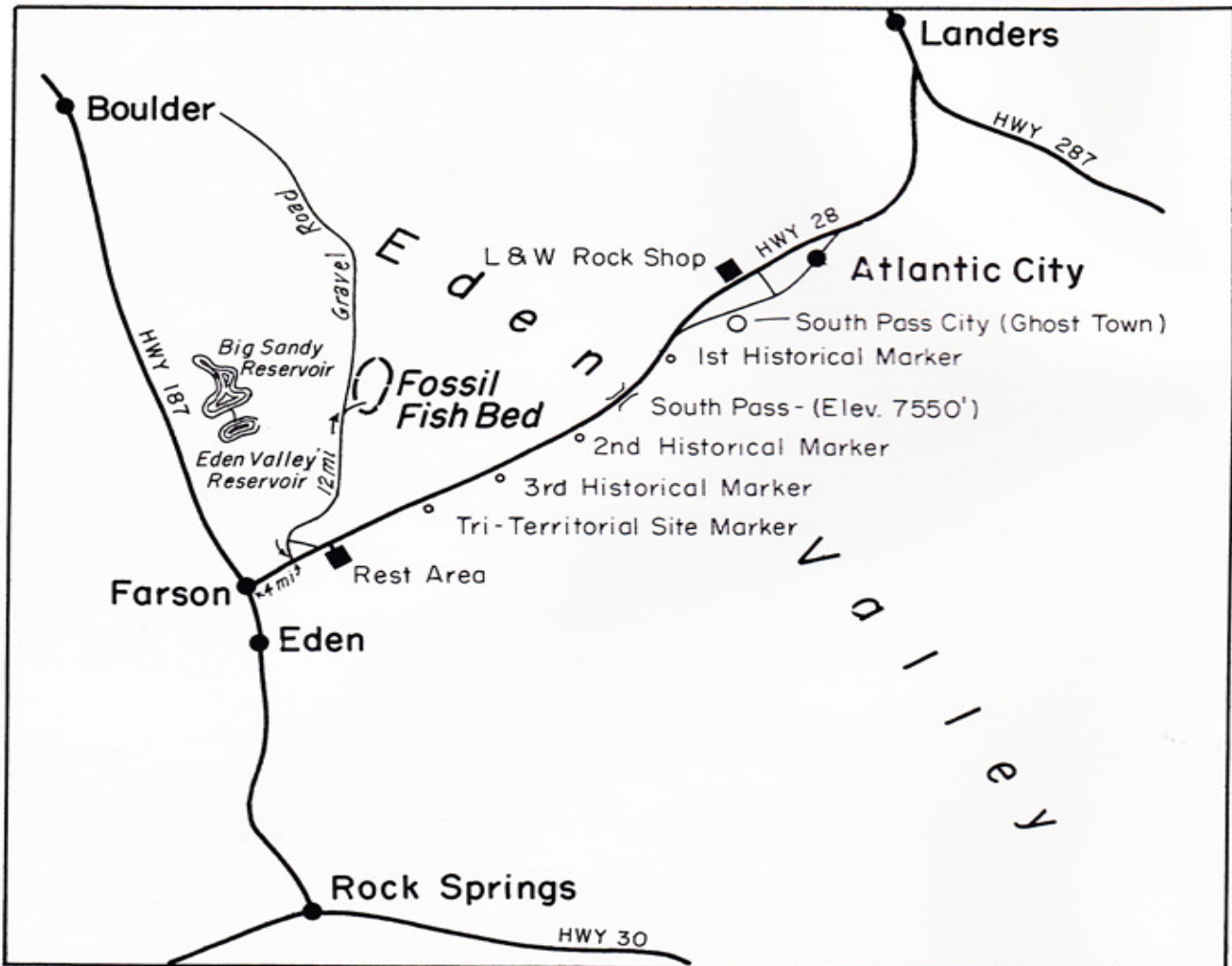
The Loshes also had some Kemmerer fish. I could see only one distinction between the Kemmerer and the Eden Valley types. The shale of the Kemmerer fossils was light beige in color and that of the Eden Valley was a reddish tan.

When my husband and I arrived at the fossil location, we found two small rockhound club groups already there. Everyone was either digging or wandering around to see what the

others had unearthed. We had never dug for fish before and did not know how to begin. After watching others for awhile, we learned that the only equipment needed was the shovel, the whisk broom and the screwdriver we had brought with us.

We began to work in untouched ground at the outer end of the spot where the others were digging. The layered shale was about a foot under the surface. We shoveled the dirt off a square approximately 6' by 6' down to the shale. Then with the screwdriver we carefully removed the thin layers of rock one piece at a time. Each layer was covered with a light coating of dirt which we brushed away with our whisk broom. Examining both sides of each sheet for fish imprints, we lifted out layer after layer to the depth of about four inches.

Then we began to uncover a fish head or a body without a head outlined in the shale. Eventually, we found seven slabs of shale, each of them bearing the lineaments of a



The gravel road to the fossil fish beds is wide and level, with loose shale piled along its sides. There is only one gas station between Landers and Farson—a distance of about 70 miles.



A view of the fish beds facing north, with the snow-capped Wind River Range in the background. Eden Valley is noted for its petrified wood as well as the abundance and excellence of its fossil fish.

Fossil Fish continued

to admire our find and told us that most of the fish appeared at the four- to six-inch level in the shale, and sometimes there would be two or more fish on the same side of a sheet.

Fossil hunting is dirty work. In Eden Valley the wind blows almost constantly. Everybody sweeps off his shale slabs and covers everybody else with his dirt.

But sweeping does not clean the specimens completely, and the dirt that remains is an aid in transporting the fossils. Fish fossils should be wrapped carefully with newspaper so that the sheets of shale will not break. It is best to place them on end in a box. If stacked flat one



Another fine specimen recovered by the author and her husband. Though the depth of the overburden may vary, most of the fish are found at the four to six-inch level in the shale.

on top of another, the weight and bouncing of the car could break them.

Having arrived at their destination, the fossil sheets should be washed in soapy water with a soft brush. When they are thoroughly dry, it is advisable to give them a coating of clear diluted shellac or diluted mucilage. This strengthens the sheets and helps preserve them. Shale sheets can be squared by sawing with a regular wood finishing saw.

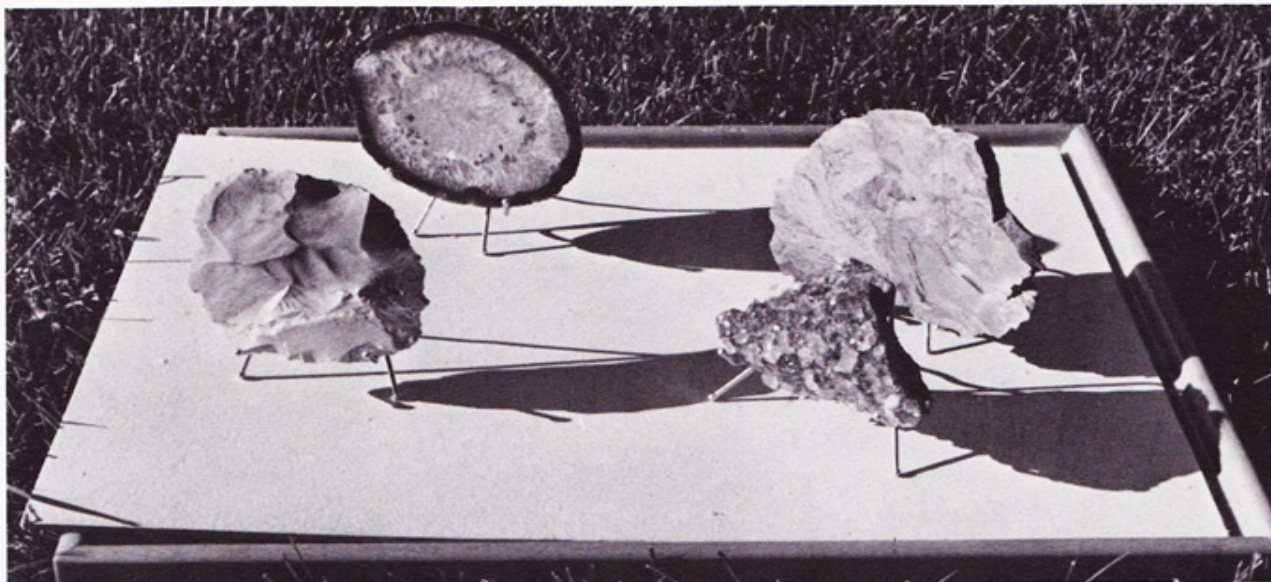
The Eden Valley fossil fish bed is easy to find. It lies straight back toward the hills from South Pass City. The gravel road to the bed is wide and level with loose shale piled along its sides. The only gas station on Highway 28 between Landers and Farson belongs to the Loshes. They also have groceries, hot sand-

wiches, soda pop and beer. There are campgrounds at Landers and Farson. Between these two towns, public forest land is reserved for campers.

It is most important that travelers keep their campgrounds clean and close all gates they open on the public lands. There are rumors that the state may close the fossil fish area because fossil hunters abuse their privileges. All rockhounds should be especially careful not to leave trash around over the landscape. They should also fill up all holes they dig in their search for fossils.

There is plenty of untouched ground in Eden Valley. It would be unfortunate if inconsiderate persons should deprive collectors of those valuable Eden Valley fossil fish—Sally A. Perkins





You can make inexpensive and attractive display stands like these with only one tool, inexpensive materials—and very little work.

Inexpensive Do-It-Yourself Slab Easels

By DOROTHY ROBERTSON

You can make your own easels to display your braggin' slabs, crystal specimens and mineral finds with a minimum of effort and for an infinitesimal sum! All you will need to buy is a package of Newell's Pleater Hooks (or similar type) for wall mounted traverse rods. Price—10 hooks for 79 cents. And they work!

To date, I have made over forty of these lightweight aluminum easels to display my collection of small slabs, crystals and minerals.

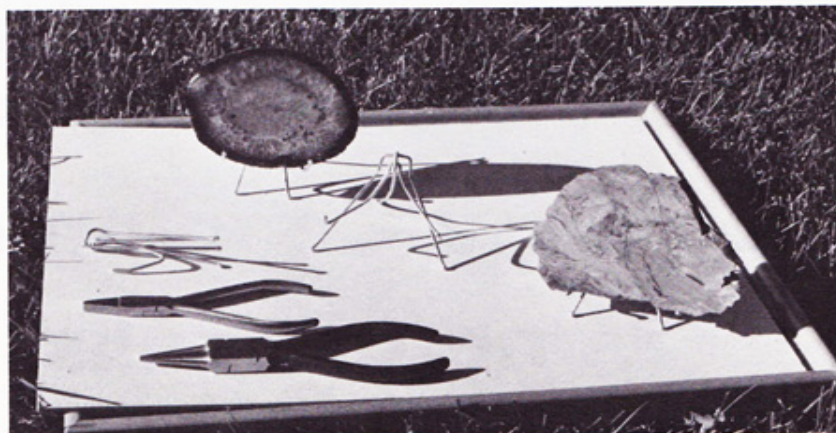
The only tool you will need is a smooth-surface flat-nose pair of pliers. Begin by gently but firmly straightening the curved hook of the back pin. Leave a slight curve at the end of the pin as a stand. Now pull this back leg straight out for a short distance. Next, spread the two center pins away from each other until they stand approximately two inches apart. Then take the two front pins and pull outward so that each pin representing a reclining angle upon which the object will rest. Bend the end of each of these pins at an angle, roughly L-shaped, about $\frac{3}{4}$ of an

inch long to act as a foot or holder for the specimen.

Adjust the balance of the respective pins so that your specimen will be firmly mounted without tipping over. An exact balance will insure this. Naturally, you will have to

adapt your pins to the size and weight of your specimens. I have even balanced a half-pound rock or one of my light aluminum stands.

A little practice will soon bring expertise in bending and balancing your easels—Dorothy Robertson



The final result—an easy-to-make, efficient small stand that really lets you show off those "keepers."



Cody 59ers Rock Club Field Trip

Ross Gorman provided you these pictures of this field trip to the Oregon Basin. Jim Platt led the trip - We first went to a Cody Shale site for marine fossils (about 80 mya). That's where Linda found the "find of the day" - a nice Ammonite (Scaphites). Then we went to the NE corner of the basin to view petroglyphs cut into sandstone cliffs - both native american and modern. Then we walk to some other sandstone outcroppings to look for leaf fossils. I don't think anyone found any. There were about a dozen members that participated.



Cheyenne Club Field Trip



Club Reports

Shoshone Rock Club May through July 2017

May 2017: Our club had been contacted in April to see if anyone would participate in a Science Night for the local elementary schools. Gary & Ilene Olson and Curt Talbot agreed to attend this event on April 28th. It was a great success and the members thanked them for volunteering to show some rocks & fossils. Curt's fossil display is always outstanding and Gary & Ilene had rough rock & many of Gary's beautiful cabochons on display. Treasurer, Linda Thomas, stated she is trying to get the club into compliance for an EIN (Employee Identification Number) required by the IRS. Apparently the club EIN number on hand could not be substantiated by the IRS. Stan Strike had brought forms for the state show & Dorine Strom & Linda Thomas will be our delegates for the WSMGS state show in Riverton, with the theme Wyoming's Sandbox, featuring opal, agate, jasper, chalcedony, & flint. Margaret Scranton won the door prize of some tumbled stones from Linna Beebe. Dorine Strom & Cresta Peterson provided refreshments for the evening which are always a welcome treat. members had brought in items for the club display case. Since it



Gary & Ilene Olson



Curt Talbot



Sand Crystals

Science Night at the local Elementary

evening, it was decided to meet at Linda Thomas's home on Wednesday, June 7th at 1:30 PM to set up the club case & also board members will discuss the club EIN with a CPA. The application has to be done online only & Linda Thomas was having difficulties completing the process with our EIN in club records. Guest, Elyse Lynn, of Powell joined as a member.

June 2017: Dorine Strom offered to lead a field trip to Oregon Basin and have a potluck also. The club has been there in the past with interesting fossils found. A small group attended, but everyone found something. Jim Platt stated he found some interesting mud balls which had baculites & shells inside. Petrified wood & more were found.

July 2017: A group of 22 members and guests were in attendance, looking forward to the program of "Geologic Collectables", soft minerals of uniqueness or beauty. On display were items such as colemanite, sand crystals, barite rose, selenite blade cluster, Brucite, copper specimen, etc. Karl Brown showed a large item that he thought might be a dinosaur bone. Mary Ann Northrup said she bought a Brucite mineral being sold for \$1.00 at a state show, but thought the item was worth around \$200. Stan Strike reported on the WSMGS rock & gem show. New officers will be: WSMGS state director-George Tillman, Sec.-Carl Tillman, Treasurer-Stan Strike, Historian-Rod Baltes, & JSN Editor-Jennifer Flowers. The

Club Reports *continued*

Shoshone Rock Club May through July 2017 *continued*

new rock club in Marbleton will host a rock & gem show on August 19, 20, 21, 2017, entitled the "Great Eclipse Rock Show" & also will be the host for the 2018 WSMGS state show. Casper has agreed to host the state show for 2019 & Powell & Cody will consider hosting the following year. Our speaker on August 8th will be geologist, Gretchen Hurley, & she will talk about the Big Horn Basin Geology. Two new members signed up at the meeting. This was a fun evening with many talking about where to find rocks & or fossils. The wealth of information from our long time members could fill a book.

Respectfully submitted, Linna Beebe, Sec.



**Friday, Aug 18, 9am-5pm
Saturday, Aug 19, 9am- 5pm
Sunday, Aug 20, 9am-4pm**

SUBLETTE COUNTY ROCK HOUNDS

present

ROPING THE MOON ECLIPSE & ROCK FEST GEM & MINERAL SHOW

**SUBLETTE COUNTY FAIRGROUNDS
MARBLETON/BIG PINEY, WYOMING
JUNCTION OF HWY 189 & HWY 351**

<i>Ethiopian Opals</i>	<i>Beaded Jewelry</i>	<i>Slabs</i>
<i>Rough Rock</i>	<i>Petrified Wood</i>	<i>Wyoming Jade</i>
<i>Fluorescent Mineral Display</i>	<i>Supplies</i>	<i>Cabochons</i>
<i>Door Prizes</i>	<i>Wheel of Fortune</i>	<i>Demonstrations</i>

**Adults \$3, Ages 12-18 & Senior Citizens \$2,
Children under 12 Free**

Contact: jimgray@wyoming.com

WSMGS CLUBS

Information subject to change; updates will be posted upon notice. Contact the Editor with changes at: jsn@wsmsg.org

Cody Fifty-Niners Rock Club

P.O. Box 1251
Cody WY 82414

cody59ers@wsmsg.org
www.Cody59ers.com

Meets 4th Thursday 7:00 p.m. Park
County Courthouse, Cody

President: Nella Flurkey
Vice-President: Teresa Rowan
Treasurer: Roger Lyons
Secretary: Linda Jennings
JSN: Linda Jennings
Historian: Jackie Platt



Shoshone Rock Club

P.O. Box 256,
Powell, WY 82435

shoshonerockclub@wsmsg.org

Meets 2nd Tuesday 7:30 p.m.
Powell Library,
317 E. 3rd Street, Powell

President: Gary Olson
Vice-President: Mary Vogel
Treasurer: Linna Thomas
Secretary: Linda Beebe
JSN: Linna Beebe
Historian: Linda Beebe
Field Trips Dorine Strom



Cheyenne Mineral & Gem Society

P.O. Box 21412
Cheyenne, WY 82001

cheyennemgs@wsmsg.org

Meets Sept. – May 2nd
Wednesday 7:00 p.m.

LCCC Health Science Bldg., 1400 E.
College Dr., Room 309, Cheyenne

President: Donna Arnold
Treasurer: Jan Shively

Natrona County Rockhounds

P.O. Box 123,
Casper, WY 82644

natronarockhounds@wsmsg.org

Meets 1st Monday 7:00 p.m.
Clubhouse, 5211 Rambler, Mills

President: Mac Goss
Vice-President: John Hine
Treasurer: Kenny Platte
Secretary: Mac Goss



Rex Young Rock Club

112 East 3rd
Lingle, WY 82223

rexyoungrockclub@wsmsg.org

Meets 2nd Wednesday 7:00 p.m.
Senior Center
216 E. 19th, Torrington

President: Kim Nielsen
Vice-President: Sherman Lenhart
Treasurer: Leroy Meiniger
Secretary: Joyce Trowbridge
JSN: Joyce Trowbridge
Historian: Joyce Trowbridge



Riverton Mineral & Gem Society

P.O. Box 1904,
Riverton, WY 82501

rivertonmgs@wsmsg.org
www.RivertonMGS.com

Meets Sept.–May 2nd
Monday 7:00 p.m.
303 E. Lincoln, Riverton

President: Rod Baltus
Vice-President: Rob Currier
Treasurer: Melvin Gustin
Secretary: Kim Brown

Sublette County Rock Hounds Club

P.O. Box 1351 Big Piney, WY 83113

subletterockhounds@wsmsg.org

Meets 3rd Saturday 1:00pm
The Bench Grill,
415 Winkleman, Marbleton, WY

President: Jim Gray
Vice-President: Mike Schaffer
Treasurer: Deb Jess
Secretary: Leane Gray

